



Ocular Response Analyzer[®]

Upgrade Procedure for
ORA Software
Version 2.04


Reichert[®]

Step 1. Back up

Back up the patient database

Find the file named [[ora.mdb](#)], then copy and paste to a secure location.

- Go to: [C:\Program Files\Reichert](#)
- Open the folder named either [[Ocular Response Analyzer](#)] or [[ORA](#)]
- Copy and Paste the [ora.mdb](#) file to a different location [desktop, USB drive, folder]

Step 2. Upgrade

Download can be found at www.ocularresponseanalyzer.com

- The most recent software version is described as [SetupORA_02.04.0002].
- Double click icon to activate Install Shield Wizard.
- An automatic upgrade will begin. Follow prompts until finished.

- A desktop icon will appear on your computer.



- Double click the [ORA 2.0] icon to start program.

- The software will automatically convert your existing data.

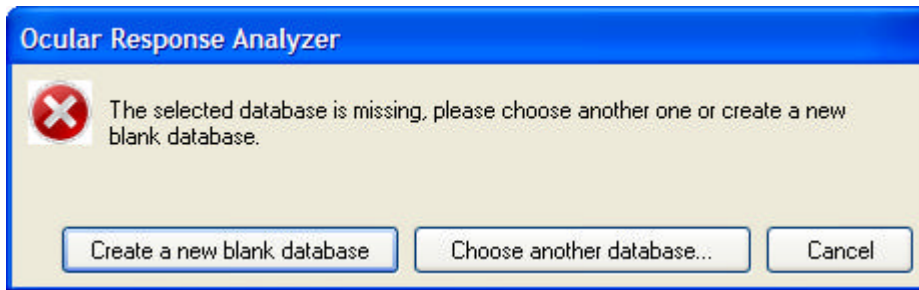
- The ORA 1.0 desktop icon and software will be removed.

If the software does not load your data, go to the next slide...



Troubleshooting

Error:



Cause: The database is either missing or was not properly converted.

Fix:

[a] Take the back up copy of the ora.mdb file made in Step 1 of the installation

[b] Copy this file to location- C:\Program Files\Reichert\ORA

[c] Start the ORA 2.0 software again

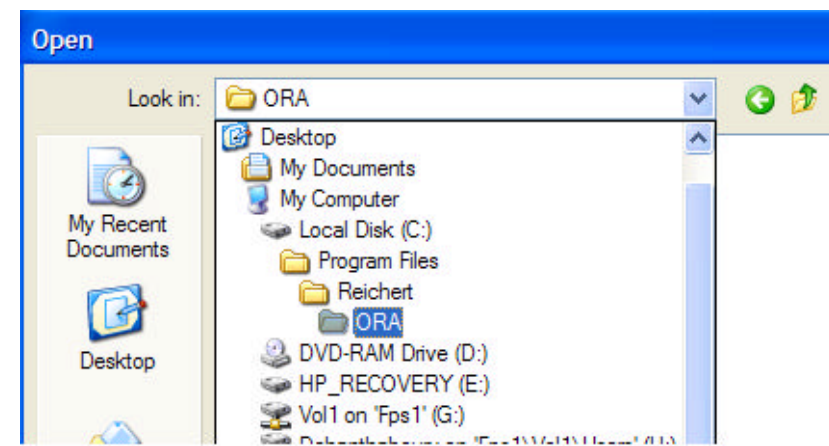
[d] Select the option " Choose another database"

[e] Point to the ora.mdb file you just copied to:

C:\Program Files\Reichert\ORA

[f] Go to: " Review" and your patient

database is restored



Quick Notes: Changes from Version 1.x to 2.04

Waveform Score (WS) - Indicates the reliability of each measurement signal

Best Signal Value (BSV) - Indicates the best measurement of each session

- Improved back up and archiving system

Back up databases "x" amount of days

- Statistical and waveform analysis

Analyze data for groups or individual patients

- Multiple database capabilities

Create separate databases for unique studies

- Expanded Print Options

Print main plot graphs, individual signals, or sequential signals